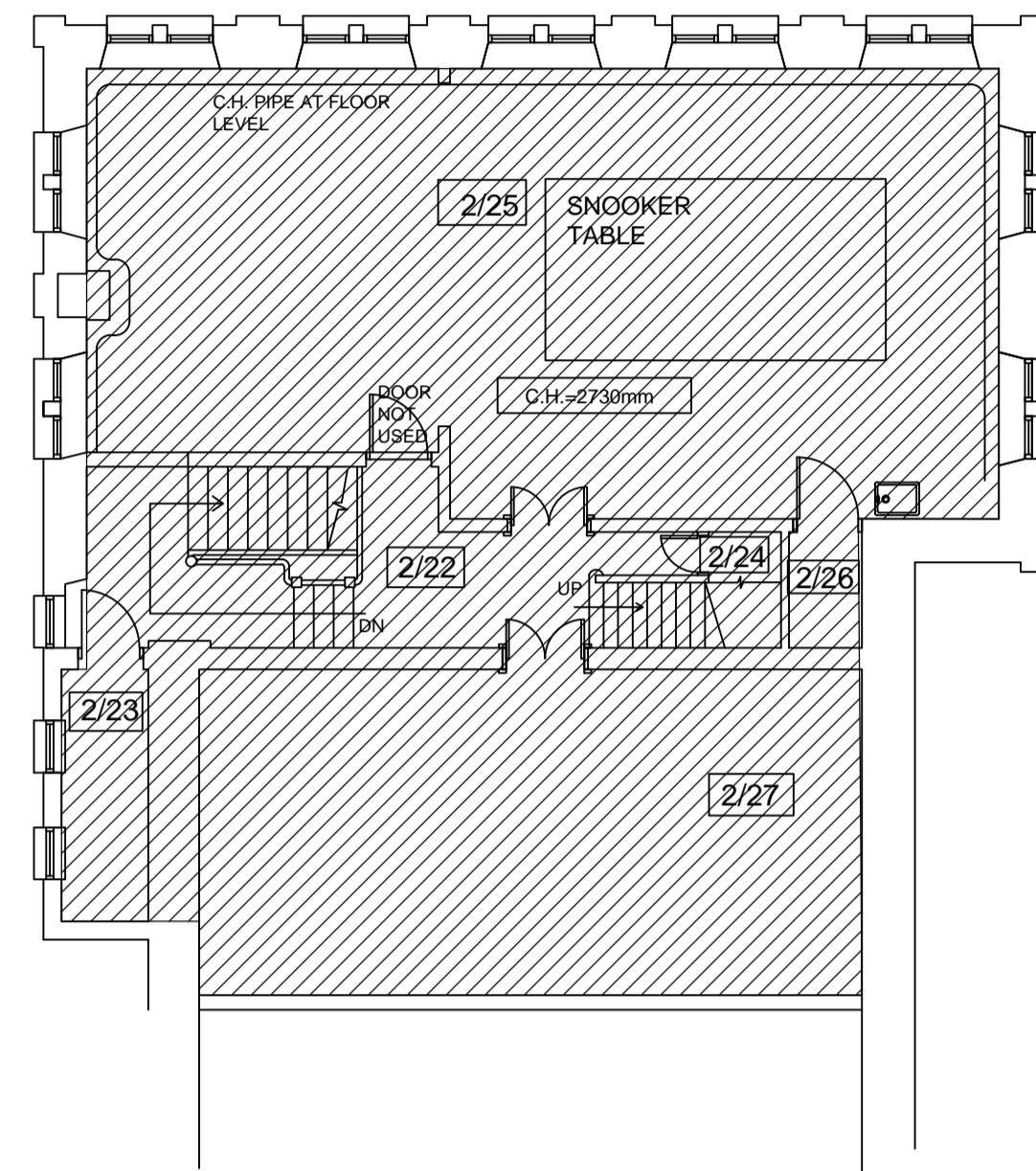
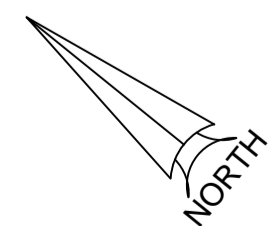
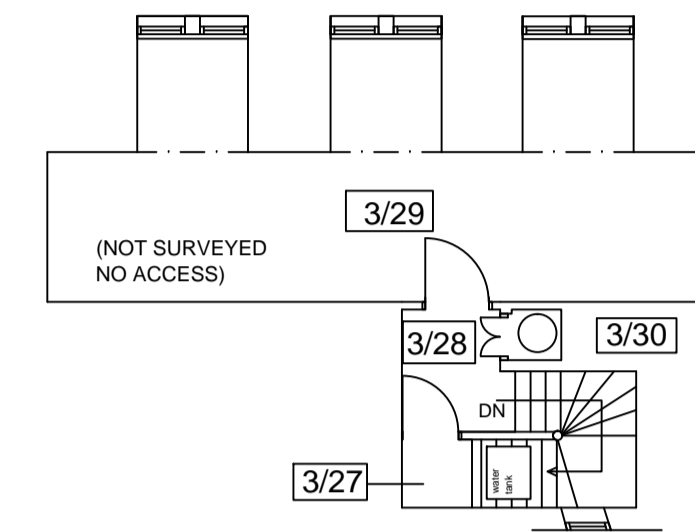


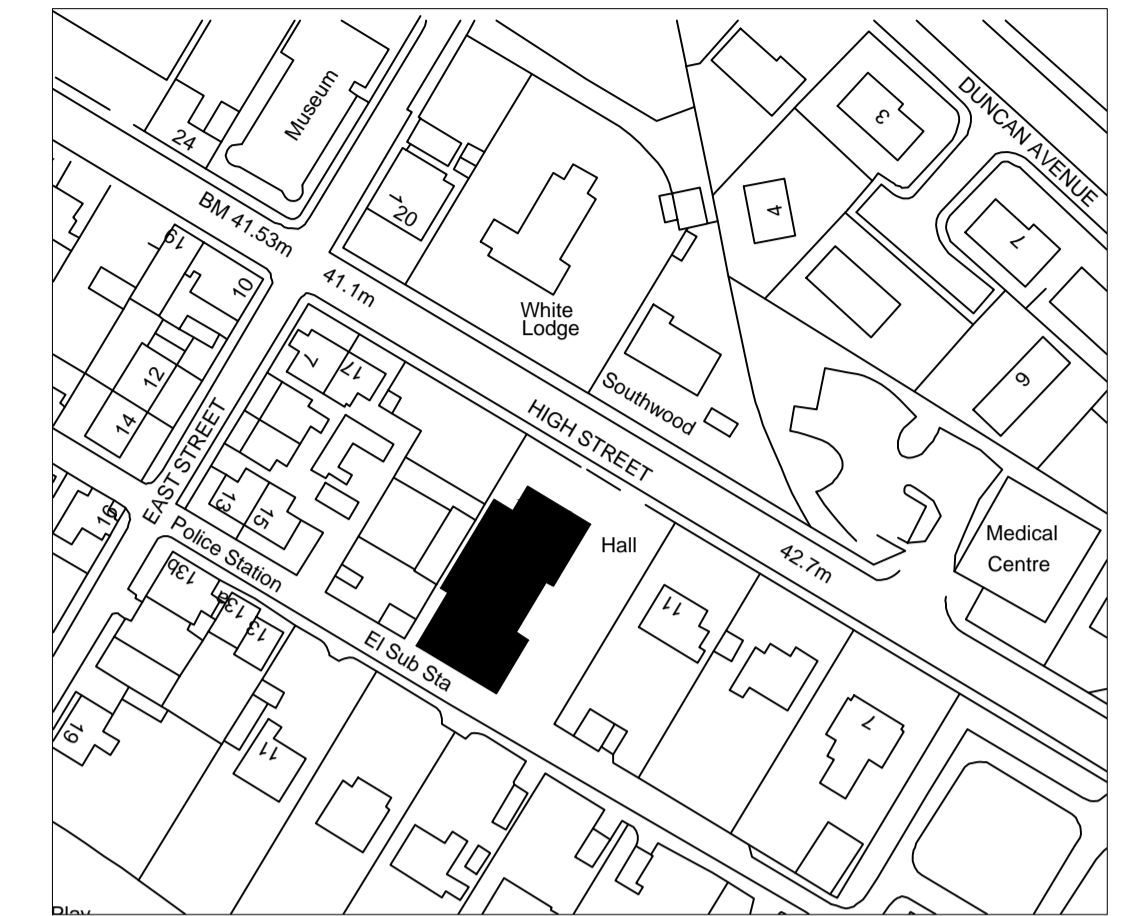
GROUND FLOOR PLAN



FIRST FLOOR PLAN



SECOND FLOOR PLAN



LOCATION PLAN SCALE 1:2500

Room Number	Room Usage	Net. Floor Area	Ceiling Height approx.
1/1	Entrance Lobby	7.5sq.m.	
1/2	Meeting Room	26.3sq.m.	
1/3	Disabled Persons Toilet	3.6sq.m.	
1/4	Gents Toilet	9.8sq.m.	
1/5	Access Corridor	2.6sq.m.	
1/6	Ladies Toilet	13.7sq.m.	
1/7	Access Corridor & Stairs	23.3sq.m.	
1/8	Store	3.2sq.m.	
1/9	Plant Room	2.9sq.m.	
1/10	Kitchen	21.2sq.m.	3050mm
1/11	The Crislie Room	71.8sq.m.	3350mm
1/12	Theatre Hall	192sq.m.	4000mm+
1/13	Stage	67sq.m.	
1/14	Ladder to lighting desk		
1/15	Access Corridor	2.2sq.m.	2400mm
1/16	Toilet	2.2sq.m.	2400mm
1/17	Dressing Room	15sq.m.	2400mm
1/18	Dressing Room	18.3sq.m.	2400mm
1/19	Access Corridor & Stairs	7.2sq.m.	2380mm
1/20	Disabled Persons Toilet	4.5sq.m.	2380mm
1/21	Prop Store	29.3sq.m.	
1/22	Electric Cupboard	0.5sq.m.	
1/23	Electric Cupboard	0.5sq.m.	
1/24	Store	0.5sq.m.	
1/25	Store	0.5sq.m.	
1/26	Store Under Stairs	2sq.m.	
1/27	Store	0.3sq.m.	
2/22	Access Corridor & Stairs	19.1sq.m.	
2/23	Store (no access)	4sq.m.	
2/24	Cupboard Under Stairs	1sq.m.	
2/25	Snooker Club	73sq.m.	2730mm
2/26	Store	1.6sq.m.	
2/27	Viewing Balcony	41.2sq.m.	
3/27	Store	0.8sq.m.	
3/28	Access Corridor & Stairs	5.6sq.m.	
3/29	Office (no access)	24.3sq.m.	
3/30	Hot Water Tank	0.4sq.m.	

TOTAL NET. INTERNAL FLOOR AREA = Approx. 698.9sq.m.

LEGEND

	= DDA PUBLIC ACCESS AREAS
	= AREA (ROOM) NUMBERS

TOTAL GROSS EXTERNAL FLOOR AREA = Approx. 871.9sq.m.
 TOTAL GROSS INTERNAL FLOOR AREA = Approx 748.5sq.m.

CAPS REFERENCE NUMBER =03/01180/ASS

DRAWING UPDATES		
DATE	DRAWN	CONTRACT No.
24.10.05	V.B.	DRAWING ALT. TO NEW FORMAT

Project : THE INSTITUTE, 15 HIGH STREET, FOCHABERS IV32 7EP	Drawing Title : PLAN AS EXISTING
Scale : 1:100 Date : 14/12/04	Environmental Services Department Property Manager
Drawn : VB	The Moray Council Commerce House, High Street, Elgin, IV30 1JE Telephone 01343 557100 Telefax 01343 557101
Drawing Number : 01180 S 01 Revision :	